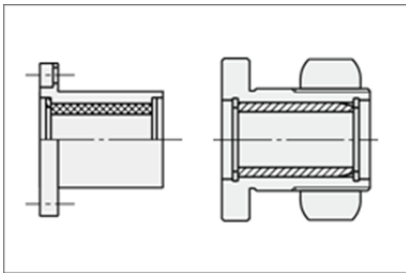


Housed bearings



Are you looking for specific bearing units in all kinds of different types from one single supplier? We make it easy for you to find the right one.

Plain Bearing Units



Geometric Shape Range: Bushings, Flange Bushings, Bearing Blocks, Thrust Washers

- High buckling load at reasonable friction depending on material pairing
- Relatively small space thus single bearing ring has bearing function
- In general the bearing is calculated to be the wear part.
- By choosing the material pairing accordingly it is possible to make the shaft the wear part.
- Lifetime is in a wide range only specified by the allowable end play of application.
- Typical tribological operation condition is mixed friction (copper base alloys) or dry friction (plastics and their compounds)
- For strong corrosive media a pairing of PTFE bearing and austenitic steel shafts is one good choice. There you will get both material advantages fully.

Examples



- Ø 6 mm – 30 mm (Screw-In Plain Bushing)
Load direction: radial
dyn. Load: 29 N/mm²
stat. Load: 98 N/mm²
PV dry: 1,65 N/mm² x m/s
PV lubricated: 3,25 N/mm² x m/s

<http://www.misumi-europe.com/en/e-catalog/vona2/result?Keyword=MPNT>



- Ø 6 mm – 50 mm (Plain Bearing with PTFE wipper)
Load direction: radial
dyn. Load: 29 N/mm²
stat. Load: 98 N/mm²
PV dry: 1,65 N/mm² x m/s
PV lubricated: 3,25 N/mm² x m/s

<http://www.misumi-europe.com/en/e-catalog/vona2/result?Keyword=MFMSC>

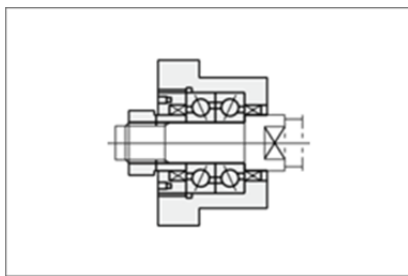
Housed bearings



- Ø 6 mm – 30 mm (Block Plain Bushing)
Load direction: radial

<http://www.misumi-europe.com/en/e-catalog/vona2/result/?Keyword=MPBA>

Screw Thread Units



Geometric Shape Range: Flange Bearings, Block Bearings

- Mostly compact and 2 angular bearings on the fixed side for combined axial/radial loads.
- Excellent radial and lateral guidance of shaft and zero end play.
- In the same size they are more economic than individual Friction bearing units thus they are high quality mass production products.

Examples



- Ø 10 mm – 25 mm (2 angular bearings)
Load direction: axial / radial

<http://www.misumi-europe.com/en/e-catalog/vona2/result/?Keyword=BRW>

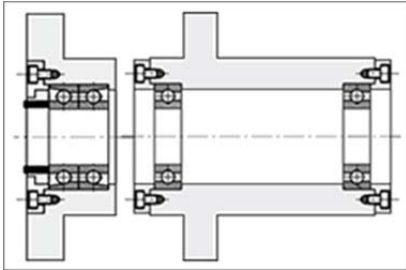


- Ø 6 mm – 20 mm (2 angular bearings)
Load direction: axial / radial

<http://www.misumi-europe.com/en/e-catalog/vona2/result/?Keyword=BSWZ>

Housed bearings

Friction bearing Units



Geometric Shape Range: Flange Bearings, Block Bearings, Cast Bearings

- Large range of Bearing pairings depending on load direction and buckling load.
- Biggest range of shapes for general design purposes and available space in application.
- Bearings including spherical races or spherical outer ring are able to compensate for angular misalignment or inaccuracy.
- Cast bearings units are cheaper compared to machined versions.

Examples



- Load direction: axial / radial
Ø 15 mm – 50 mm (1 Ball Bearing / 2 Angular Bearings)

<http://www.misumi-europe.com/en/e-catalog/vona2/result?Keyword=ABGYB>



- Load direction: radial
Ø 15 mm – 30 mm (2 Angular Bearings)

<http://www.misumi-europe.com/en/e-catalog/vona2/result?Keyword=GBGWB>



- Load direction: axial / radial
Ø 15 mm – 50 mm (2 angular bearings)

<http://www.misumi-europe.com/en/e-catalog/vona2/result?Keyword=ABGEB>



- Load direction: axial / radial
Ø 7 mm – 30 mm (Radial Needle Bearing / Axial Ball Bearing)

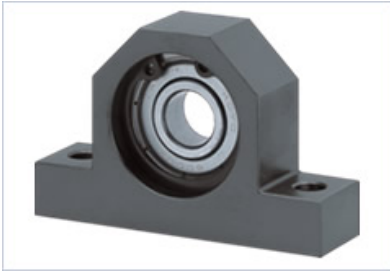
<http://www.misumi-europe.com/en/e-catalog/vona2/result?Keyword=BGCSB>

Housed bearings



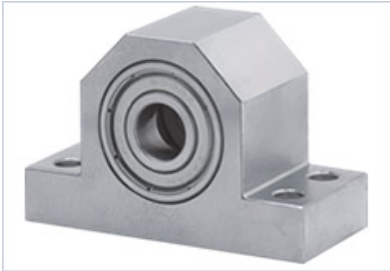
- Load direction: radial
Ø 3 mm – 50 mm (2 Angular Bearings)

<http://www.misumi-europe.com/en/e-catalog/vona2/result?Keyword=BGRZB>



- Load direction: radial
Ø 3 mm – 40 mm (1 Ball Bearing)

<http://www.misumi-europe.com/en/e-catalog/vona2/result?Keyword=BGHKB>



- Load direction: radial
Ø 3 mm – 40 mm (2 Angular Bearings)

<http://www.misumi-europe.com/en/e-catalog/vona2/result?Keyword=BGHWB>



- Load direction: radial
Ø 3 mm – 30 mm (1 Ball Bearing)

<http://www.misumi-europe.com/en/e-catalog/vona2/result?Keyword=BGBKB>



- Load direction: radial
Ø 3 mm – 30 mm (2 Angular Bearings)

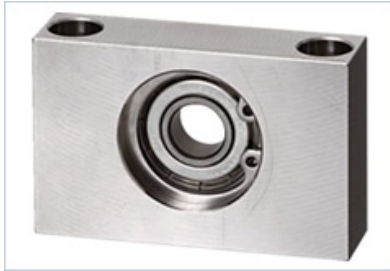
<http://www.misumi-europe.com/en/e-catalog/vona2/result?Keyword=BGBWB>

Housed bearings



- Load direction: radial
Ø 8 mm – 20 mm (2 Angular Bearings)

<http://www.misumi-europe.com/en/e-catalog/vona2/result?Keyword=BGTWB>



- Load direction: radial
Ø 8 mm – 20 mm (1 Ball Bearing)

<http://www.misumi-europe.com/en/e-catalog/vona2/result?Keyword=BGTKB>



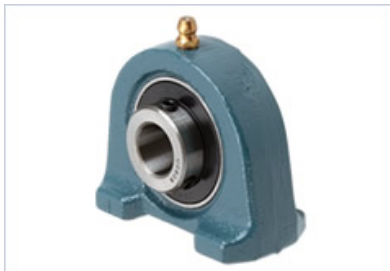
- Load direction: radial
Ø 3 mm – 30 mm (1 Ball Bearing)

<http://www.misumi-europe.com/en/e-catalog/vona2/result?Keyword=BGLKB>



- Load direction: radial
Ø 12 mm – 30 mm (1 Ball Bearing)

<http://www.misumi-europe.com/en/e-catalog/vona2/mech/M080000000/M080500000/M080501000/>

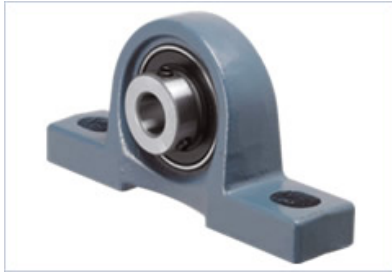


- Load direction: radial
Ø 12 mm – 50 mm (1 Ball Bearing)

<http://www.misumi-europe.com/en/e-catalog/vona2/mech/M080000000/M080500000/M080501000/>

BESTSELLER

Housed bearings



- Load direction: radial
Ø 20 mm – 40 mm (1 Ball Bearing)

<http://www.misumi-europe.com/en/e-catalog/vona2/mech/M0800000000/M0805000000/M0805010000/>