

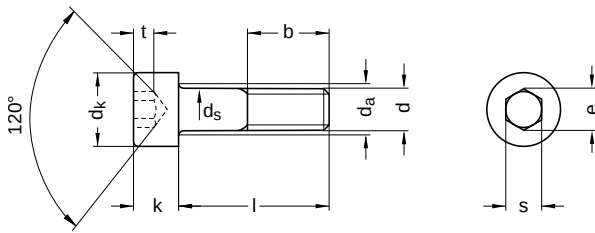
**DIN 912** similar to ISO 4762

## Cylinder screws

Hexagon socket

Steel 12.9 | bright | Cr(VI)-free | Metric thread

Further information: DIN-standard has been withdrawn | changed nominal lengths | the fine thread has been transferred to ISO 12474



Diameter (d)	b nominal size	d <sub>a</sub> max.	d <sub>k</sub>		d <sub>s</sub>		k		e min.	s		t min.	
			min.	max.	min.	max.	min.	max.		nominal size	min.		max.
M 2	16	2.6	3.62	3.8	1.86	2	1.86	2	1.73	1.5	1.52	1.56	1.0
M 3	18	3.6	5.32	5.5	2.86	3	2.86	3	2.87	2.5	2.52	2.58	1.3
M 4	20	4.7	6.78	7.0	3.82	4	3.82	4	3.44	3.0	3.02	3.08	2.0
M 5	22	5.7	8.28	8.5	4.82	5	4.82	5	4.58	4.0	4.02	4.10	2.5
M 6	24	6.8	9.78	10.0	5.82	6	5.82	6	5.72	5.0	5.02	5.14	3.0
M 8	28	9.2	12.73	13.0	7.78	8	7.78	8	6.86	6.0	6.05	6.14	4.0
M 10	32	11.2	15.73	16.0	9.78	10	9.64	10	9.15	8.0	8.02	8.18	5.0
M 12	36	13.7	17.73	18.0	11.73	12	11.57	12	11.43	10.0	10.02	10.18	6.0
M 14	40	15.7	20.67	21.0	13.73	14	13.57	14	13.72	12.0	12.03	12.21	7.0
M 16	44	17.7	23.67	24.0	15.73	16	15.57	16	16.00	14.0	14.03	14.21	8.0
M 18	48	20.2	26.67	27.0	17.73	18	17.57	18	16.00	14.0	14.03	14.21	9.0
M 20	52	22.4	29.67	30.0	19.67	20	19.48	20	19.44	17.0	17.05	17.23	10.0
M 24	60	26.4	35.61	36.0	23.67	24	23.48	24	21.73	19.0	19.06	19.28	12.0
M 27	66	30.4	39.61	40.0	26.67	27	26.48	27	21.73	19.0	19.06	19.28	13.5
M 30	72	33.4	44.61	45.0	29.67	30	29.48	30	25.15	22.0	22.06	22.28	15.5
M 36	84	39.4	53.54	54.0	35.61	36	35.38	36	30.85	27.0	27.06	27.28	19.0

All technical data refer to the measure mm



**DIN 912** similar to ISO 4762

## Cylinder screws

Hexagon socket

Steel 12.9 | bright | Cr(VI)-free | Metric thread

Length (l)			Length (l)			Length (l)		
nominal size	min.	max.	nominal size	min.	max.	nominal size	min.	max.
4	3.76	4.24	80	79.40	80.60	280	278.95	281.05
5	4.76	5.24	85	84.30	85.70	290	288.95	291.05
6	5.76	6.24	90	89.30	90.70	300	298.95	301.05
8	7.71	8.29	95	94.30	95.70	310	308.95	311.05
10	9.71	10.29	100	99.30	100.70	320	318.85	321.15
12	11.65	12.35	110	109.30	110.70	330	328.85	331.15
14	13.65	14.35	120	119.30	120.70	340	338.85	341.15
16	15.65	16.35	130	129.20	130.80	350	348.85	351.15
18	17.65	18.35	140	139.20	140.80	360	358.85	361.15
20	19.58	20.42	150	149.20	150.80	370	368.85	371.15
22	21.59	22.42	160	159.20	160.80	380	378.85	381.15
25	24.58	25.42	170	169.20	170.80	400	398.85	401.15
30	29.58	30.42	180	179.20	180.80	420	418.75	421.25
35	34.50	35.50	190	189.10	190.90	440	438.75	441.25
40	39.50	40.50	200	199.10	200.90	460	458.75	461.25
45	44.50	45.50	210	209.10	210.90	480	478.75	481.25
50	49.50	50.50	220	219.10	220.90	500	498.75	501.25
55	54.40	55.60	230	229.10	230.90			
60	59.40	60.60	240	239.10	240.90			
65	64.40	65.60	250	249.10	250.90			
70	69.40	70.60	260	258.95	261.05			
75	74.40	75.60	270	268.95	271.05			

All technical data refer to the measure mm

