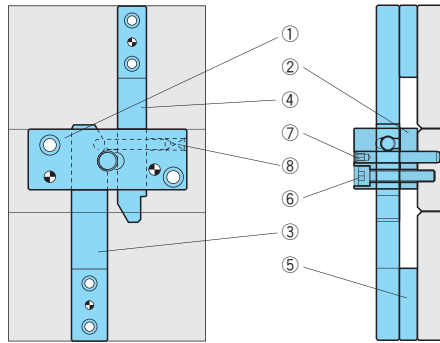


DIN TYPE LATCH

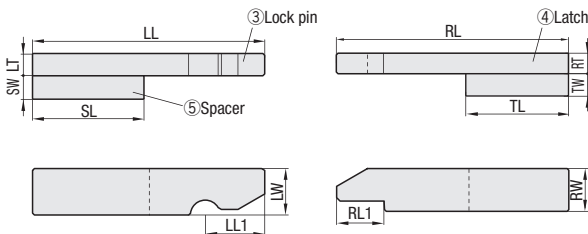
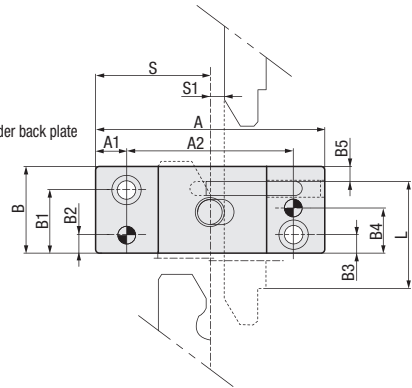
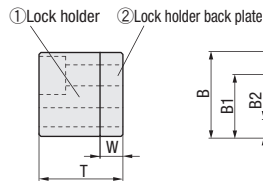
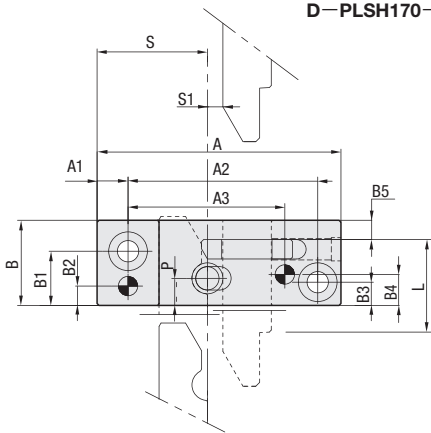
—BALL TYPE—

D—PLSH170 (1~8) Sets



D—PLSH170—1
D—PLSH170—2

D—PLSH170—3



Item	Name	M	H
①	Lock holder	Cr12MoV	52~56HRC
②	Lock holder back plate		
③	Lock pin	SKD11+DLC processing	Surface : 3000HV
④	Latch		Material : 35~40HRC
⑤	Spacer	S45C	Raw material
⑥	Hexagon Socket Head Bolt	SCM435	35~43HRC
⑦	Dowel pin	SUJ2	45~50HRC
⑧	Spring	SUS631	—

Part No.	①Lock holder ②Lock holder back plate														③Lock pin				④Latch			
	Type	No.	A	A1	A2	A3	B	B1	B2	B3	B4	B5	P	W	T	LL	LW	LT	LL1	RL	RT	RW
D—PLSH170	1	63	8	49	40.5	22	14	5	6	8	5	7	6	22	100	12.5	6	16	125	6	12.5	13.8
	2	90	13	69	62	34	24	8	8	18	5	16	7.5	32.5	140	20	12.5	22.5	160	12.5	16	17.7
	3	110	15	80	—	42	31	9	9	22	7	20	12	44	200	25	16	25	250	16	20	17.6

Part No.	⑤Spacer				Accessories			S Position	S1 Position	Stroke (min)	Stroke (max)	Pulling force (kgf)
	Type	No.	SW	SL	TW	TL	⑥Bolt					
D—PLSH170	1	6.5	63	6.5	80	M5 × 25	5 × 30	28.5	4	5.5	80	800
	2	8	100	8	125	M6 × 40	6 × 50	45	6	9.5	110	1400
	3	12.5	100	12.5	125	M8 × 45	8 × 60	55	7	10.5	190	2400



Order

Part No. — No.

D—PLSH170 — 1



Days to Ship

12 Days



Example

